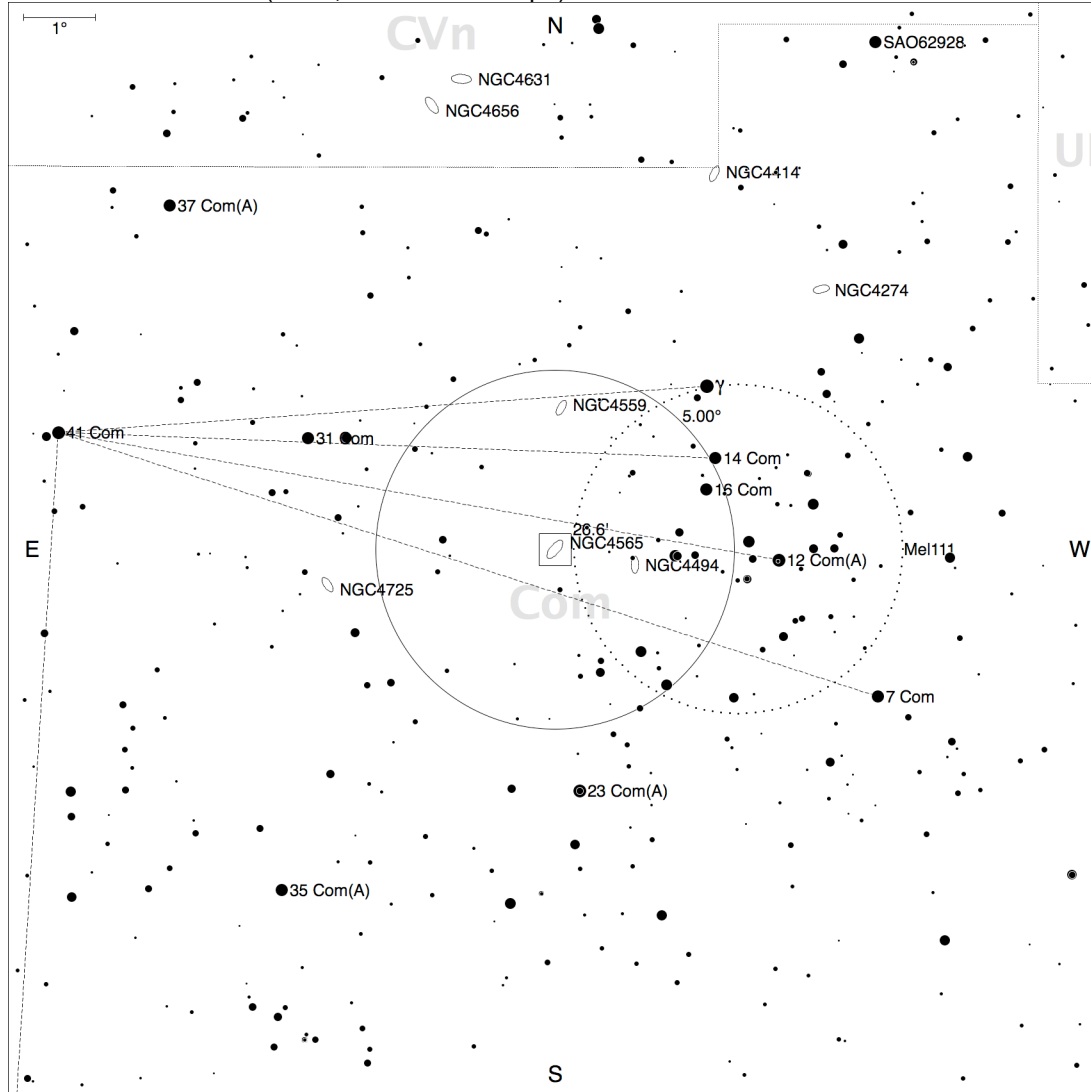
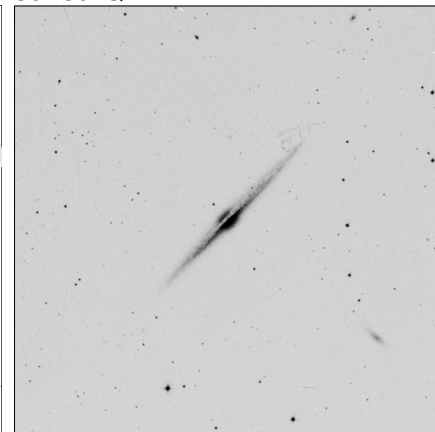


Finder Context: 15.0° (5.00°, 8x50 Finderscope)



30'x30' Q-V



**Type:** Galaxy  
**Rise:** 13:53:00  
**Transit:** 21:22:00  
**Set:** 04:51:00  
**Chart #:** V1-71  
**ODM:** 52  
**Mag (pri):** 9.6  
**Size:** 16.2x16.2  
**SB:** 24.3  
**Pos Ang:** 141  
**Notes:**

B, eL, eE 135deg, vsbMN = \*10-11